



£1,250 Monthly

Portsea Close, Cheylesmore, Coventry, CV3 5JQ

Terraced House | 3 Bedrooms | 2 Bathrooms

Benburys
SALES AND LETTINGS

0247 6661 553

www.benburys.co.uk



Step Inside

Property Description

Benburys are pleased to present this newly renovated three-bedroom family home in the sought-after area of Cheylesmore. This property features an open-plan kitchen and dining area, perfect for modern family living. The lounge, located at the rear, opens onto the garden through French doors. The house boasts three bedrooms, an office, a contemporary family bathroom upstairs, and a convenient downstairs shower room. This home must be seen to be fully appreciated.

The property is located within walking distance to Coventry railway station, Memorial Park, and the City Center, this house combines convenience with easy access to Coventry's amenities.

Holding deposit of £288 to secure the property

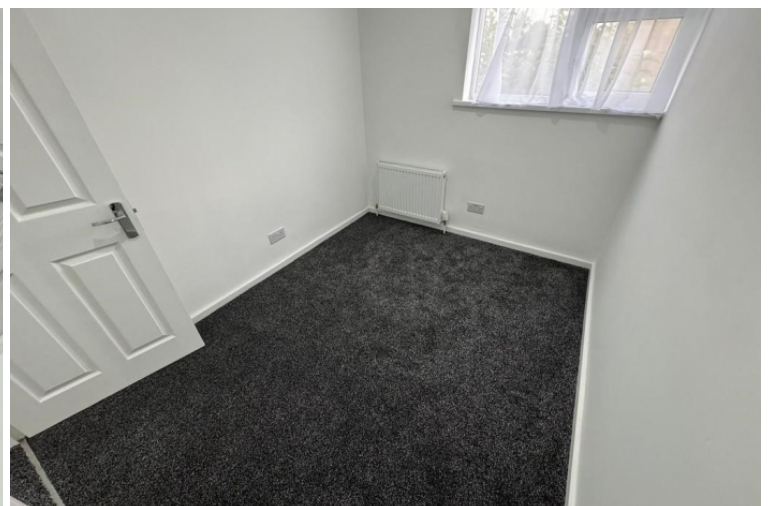
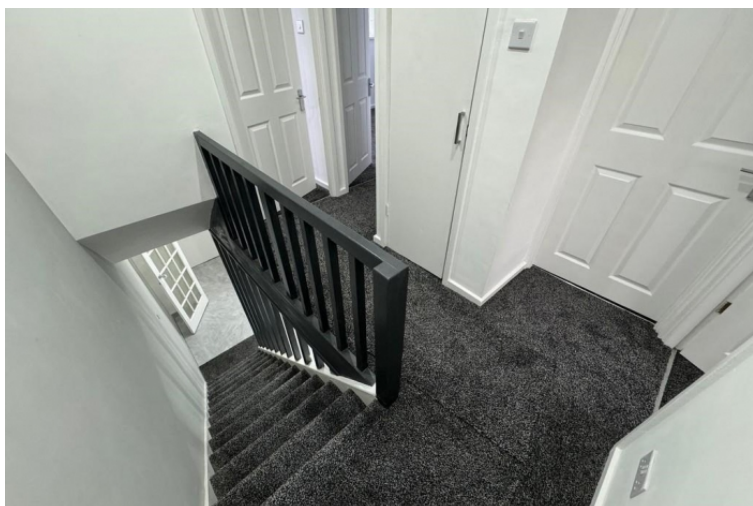
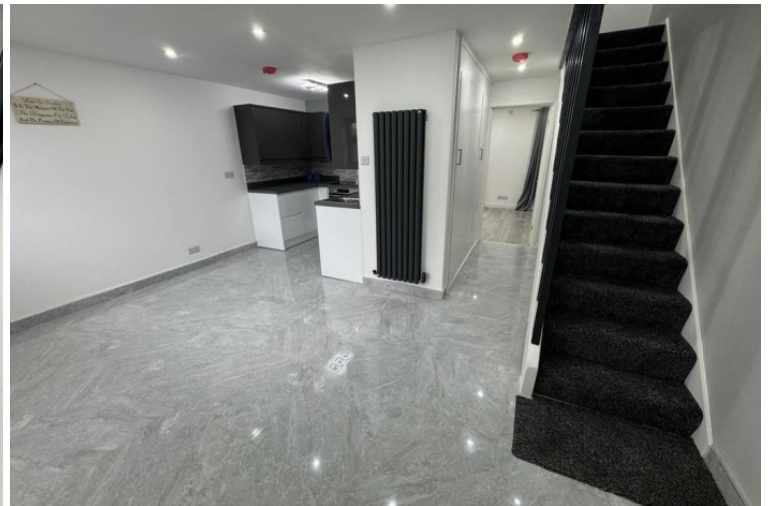
Main Particulars

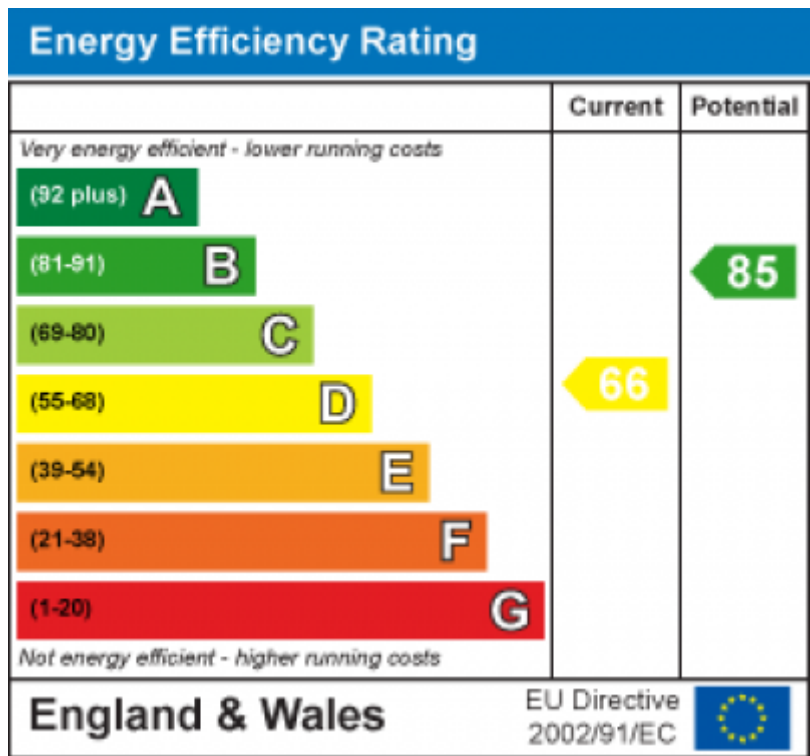
Benburys are pleased to present this newly renovated three-bedroom family home in the sought-after area of Cheylesmore. This property features an open-plan kitchen and dining area, perfect for modern family living. The lounge, located at the rear, opens onto the garden through French doors.

The house boasts three bedrooms, an office, a contemporary family bathroom upstairs, and a convenient downstairs shower room. This home must be seen to be fully appreciated.

The property is located within walking distance to Coventry railway station, Memorial Park, and the City Center, this house combines convenience with easy access to Coventry's amenities.

Holding deposit of £288 to secure the property





Telephone: 0247 6661 553
 Email: enquiries@benburys.co.uk



www.benburys.co.uk